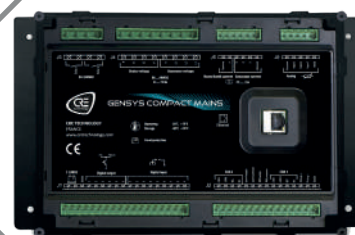




PARALLELENO SOLUTIONS



Innovation

for
better

control



PARALLELING SOULATION

Innovation for better control

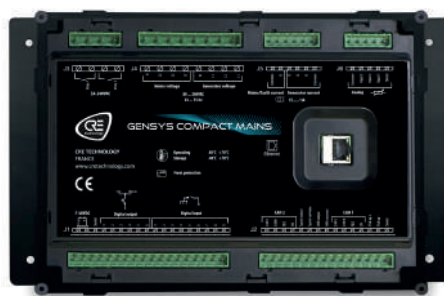
MODULES

GENSYS compact MAINS

The **GENSYS COMPACT MAINS** is a new panel-mounted generator controller fit for standby application. This new generation of controller is optimized for its ease of use. The **GENSYS COMPACT MAINS** benefit from years of CRE TECHNOLOGY experience in mains paralleling with standby genset, whatever it is permanent paralleling, automatic mains failure detection or no break transfer.

The **GENSYS COMPACT MAINS** offers a fully compatible module with all speed governors and AVR's and J1939 communication with electronic engines. Isolated speed and AVR outputs and 3 isolated communication ports: 2 for CANbus, 1 for Ethernet. It includes all necessary functions:

- Manual or automatic generator control
- Automatic start/stop depending on mains failure or external request
- kW peak Shaving or kW base load mains paralleling with PF control
- Automatic frequency & phase synchronisation (differential frequency meter + synchroscope available on screen)
- Engine parameters: oil pressure, water temperature, speed, hours run meter



GENSYS COMPACT MAINS
CORE VERSION

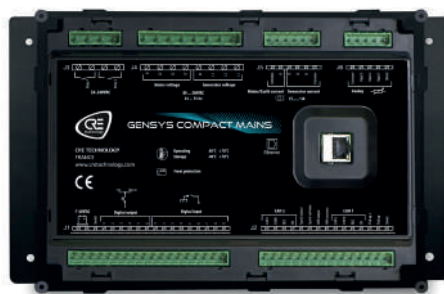


GENSYS COMPACT MAINS
WITH DISPLAY

i4GEN & GENSYS COMPACT CORE

The **i4GEN** is a multi-touch screen color display develop for harsh environment and industrial areas providing access to all controller's data for control, measurement and configuration. Thanks to an embedded TeamViewer Licence it will be possible to access remotely to the **i4GEN** for support, remote control or fleet management.

The **GENSYS COMPACT CORE** is a core base mounted all in one controller, compatible with i4GEN touchscreen color display, **GENSYS COMPACT CORE** is made to control gensets in power plant paralleling, or single/ backup generator in parallel with mains.



GENSYS COMPACT CORE
PRIME OR MAINS



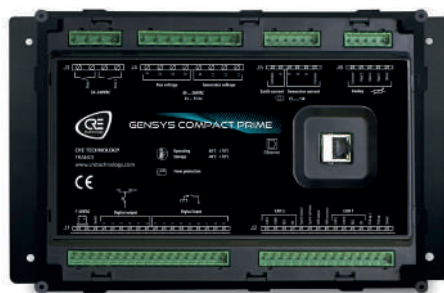
i4GEN 10" NEW TOUCH SCREEN AND
COLOR HMI

GENSYS compact prime

The **GENSYS COMPACT PRIME** is a panel-mounted generator controller fit for standby application. This controller is optimized for its ease of use. Installation and configuration for up to 32 generators in island (-parallel mode). **GENSYS COMPACT PRIME** will benefit from years of GENSYS 2.0 experience.

It includes all necessary functions:

- Up to 32 generators in parallel, manual or automatic generator control,
- kW & kVAR load sharing control, Dead busbar management,
- Automatic frequency & phase synchronisation (differential frequency meter + synchroscope available on screen)
- Engine parameters: oil pressure, water temperature, speed, hours run meter



GENSYS COMPACT PRIME
CORE VERSION



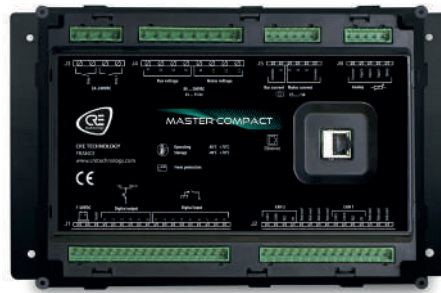
GENSYS COMPACT PRIME
WITH DISPLAY

MASTER COMPACT

MASTER COMPACT is a new controller made to manage genset power plants from 2 to 30 gensets in change over with mains or in parallel with mains.

MASTER COMPACT range offers flexibility and time saving thanks to its simple wiring, all features includes (no option), and easy engineering & programming.

Its available in both switchboard panel mounted version with display, or core base mounted version. And compatible with **i4GEN** touchscreen color display.



MASTER COMPACT
CORE VERSION



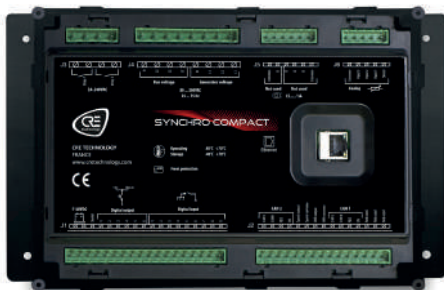
MASTER COMPACT
WITH DISPLAY

SYNCHRONIZING & LOAD SHARING - PROTECTION CONTROLLERS

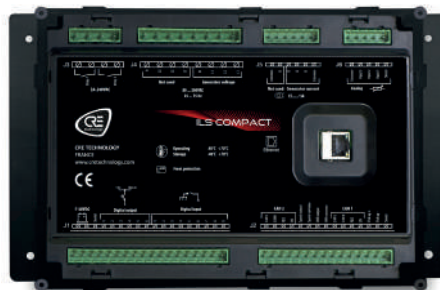
compact RANGE

The **COMPACT RANGE** offer the following single or combined features: synchronizing, active and reactive load sharing, fixed power, fixed frequency or voltage, load dependent start/stop management, and protections. The **COMPACT RANGE** offers flexibility and time saving thanks to its simple wiring, all features included (no option), and easy engineering & programming. This new generator controller range is available in both switchboard panel mounted version with display, or core base mounted version.

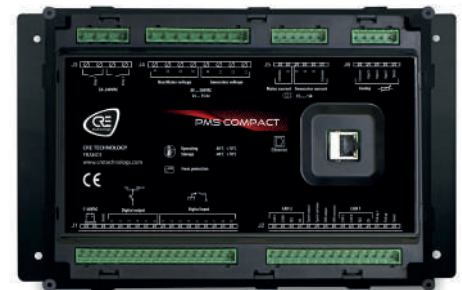
- Compatible with all engines ECUs in J1939, speed governors, alternators and AVR/DVRs voltage regulators,
- Isochronous and Iso-voltage active & reactive load sharing,
- Fixed kW/KVAR load or droop mode,
- Frequency and voltage control compensation for generators with droop governors and/or AVR/DVR.



SYNCHRO COMPACT
CORE VERSION



ILS COMPACT
CORE VERSION



PMS COMPACT
CORE VERSION



SYNCHRO COMPACT
WITH DISPLAY



ILS COMPACT
WITH DISPLAY



PMS COMPACT
WITH DISPLAY

PARALLELING SOLUTIONS

Innovation for better control

ADVANCED MODULES «ALL-IN-ONE»

gEnsyst 2.0

The **GENSYS 2.0** is a control unit designed for generator electrical panels. It combines all necessary functions:

- Automatic transfer on mains failure,
- Engine start/stop and protection,
- Alternator control and protection,
- Mechanical and electrical parameters display,
- Generator synchronization and load sharing by kW & kVAR control,
- Manual and automatic paralleling with mains (frequency, phase, voltage),
- kW power management with several modes,
- Permanent paralleling in base load & in peak shaving mode,
- Power factor control when paralleling with mains,
- Vector phase compensation for step-up transformer (ex Dyn 11).

GENSYS 2.0 configured via its front panel or via a PC with CRE Config software. The unit has analog load sharing inputs and is compatible with all types of analog load sharing modules.



GENSYS 2.0

gEnsyst 2.0 LT

The **GENSYS 2.0 LT** is a control unit designed for generator electrical panels. It combines all necessary functions when custom instructions are not required:

- Automatic transfer on mains failure,
- Engine start/stop and protection,
- Alternator control and protection,
- Mechanical and electrical parameters display,
- Load sharing by kW control & kVAR control,
- Manual & automatic paralleling with mains (frequency, phase & voltage),
- kW power management with several modes,
- Permanent paralleling in base load & in peak shaving mode,
- Power factor control when paralleling with mains,
- Vector phase compensation for step-up transformer (ex Dyn11)

The **GENSYS 2.0 LT** is configurable via its front panel or via a PC with **CRE CONFIG SOFTWARE**.



GENSYS 2.0 LT

master 2.0

The **MASTER 2.0** is a power plant controller for mains in parallel with several generators. It includes all necessary functions:

- Mains management,
- Three phase mains failure detection,
- Electrical protection & parameters display,
- Manual and automatic paralleling with mains (frequency, phase & voltage),
- kW power management with several modes,
- No break change over with load transfer,
- Permanent paralleling in base load & in peak shaving mode,
- Power factor control when paralleling with mains,
- Vector phase compensation for step-up transformer (ex Dyn11).



MASTER 2.0



PARALLELING SOLUTIONS

Innovation for better control

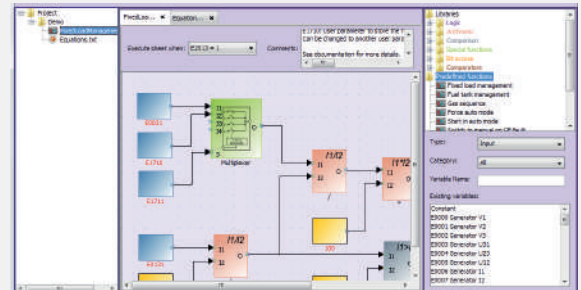
PROGRAMMING

easy plc

Program and customize your internal logical sequences

CRE TECHNOLOGY's **EASY PLC** is a logic editor which provides graphical interface to create PLC instructions for **GENSYS 2.0**.

EASY PLC simplifies the process of proprietary writing instructions thanks to a user-friendly graphic environment. That includes many sheets in which the user create instructions through «operators».



CRE CONFIG

Configuration software

CRE TECHNOLOGY has developed a new PC software which allows you to connect to multiple GENSYS & UNIGEN Family modules. This user-friendly software allows you to configure and monitor your power plant in real time.

- As a SCADA (monitoring), for configuration and module setting (SYSTEM)
CRE CONFIG software allows you to configure and monitor up to 14 modules.



DEMONSTRATION SUITCASE

Customer product demonstration & application tests

This test and demonstration cases (built in flight case) is for our **GENSYS 2.0 & GENSYS COMPACT PRIME**.

Inputs/outputs are wired on switch or lamps. Connections are made with a 230VAC outlet. CRE Config software allows you to configure and monitor up to 14 modules.



GENSYS COMPACT PRIME
DEMONSTRATION SUITCASE



GENSYS 2.0
DEMONSTRATION SUITCASE



Local Partner

CRE TECHNOLOGY - 130, allée Charles-Victor Naudin -
Zone des Templiers - SOPHIA ANTIPOLIS - 06410 BIOT - FRANCE
Phone : + 33 (0)4 .92.38.86.82 -
www.cretechnology.com - info@cretechnology.com

Office No:
501 , Makkah Tower, King Abdullah Road, Makkah
Street Crossing PO Box : 4160, Al Khobar 31952
Kingdom of Saudi Arabia + 966 (13) 8642040
info@anjamgroup.com www.anjamgroup.com