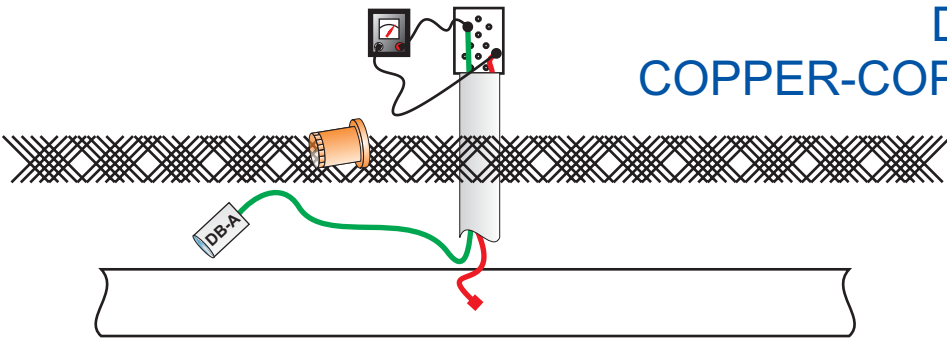


REFERENCE ELECTRODES

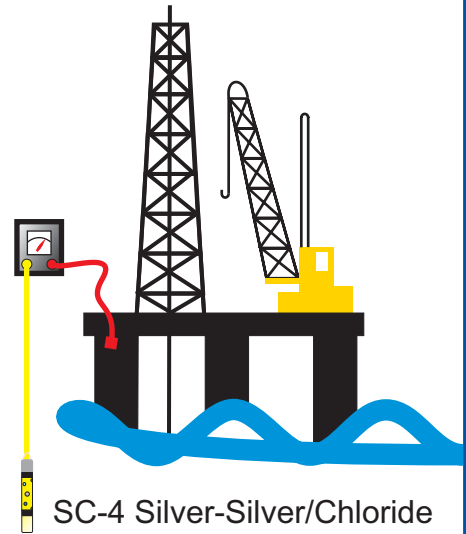


DIRECT BURIAL
COPPER-COPPER/SULFATE
(CuCu/SO⁴)

Model DB-A Copper-Copper/Sulfate Reference Electrode designed for direct burial for long term monitoring of buried or earth contacting structures.

Large surface area of exposed copper-sulfate mixture
Long life - 10+ years
Use with rapid-wetting backfill
Encapsulate fill area for permanent water seal of wire connection
Rugged construction
Body made of PVC/ABS

SILVER - SILVER/CHLORIDE
(AgAg/Cl)



SC-4 Silver-Silver/Chloride Reference electrode kit.

MODEL SC-4

The Model SC-4 Silver-Silver/Chloride kit comes complete with everything necessary to conduct field tests both ON SHORE and OFF SHORE.

Distributed by

Reference Cell body for LAND
Reference Cell body for SEA
Brass Weight
Waterproof connection
Silver element
"Ocean Water"
Carrying case



TINKER & RASOR

CORROSION MITIGATION INSTRUMENTATION

PRODUCT DATA SHEET

MODEL DB-A

Features:

- Rugged body
- Large copper-sulfate surface area
- Long life (10+ years)

Construction:

Tough PVC/ABS body with proprietary solid copper-sulfate mixture, and pure copper rod.

Applications:

Under ground without chloride (<500 PPM) or fresh water or sea water contamination.

Recommendations:

Best Results with rapid wetting backfill, such as bentonite to ensure a moist environment for the reference electrode.

Environment:

Low Freezing Point and high boiling point makes rugged product in most environments.

Specifications:

Copper-Copper/Sulfate reference electrode.

Tip:

Proprietary, non-tip electrode, with direct exposure of copper sulfate mixture to backfill/soil.

Dimensions:

2.875" diameter, 4.88" long

Approximate weight 1.5 lbs (0.700 Kgs)

WIRE AND EPOXY NOT INCLUDED

MODEL SC-4

Features:

- (2) Body types for use on LAND and SEA
- Waterproof connector
- Pure silver element
- Carrying case

Construction:

Strong plastic body, with a brass weight for SEA use. Waterproof connector with stainless steel wire strain relief, for pulling cell up from great depths.

Applications:

- Offshore structures
- Land based structures

Specifications:

- Silver-Silver/Chloride reference electrode (AgAg/Cl)
- 99.99% Pure Silver

Dimensions:

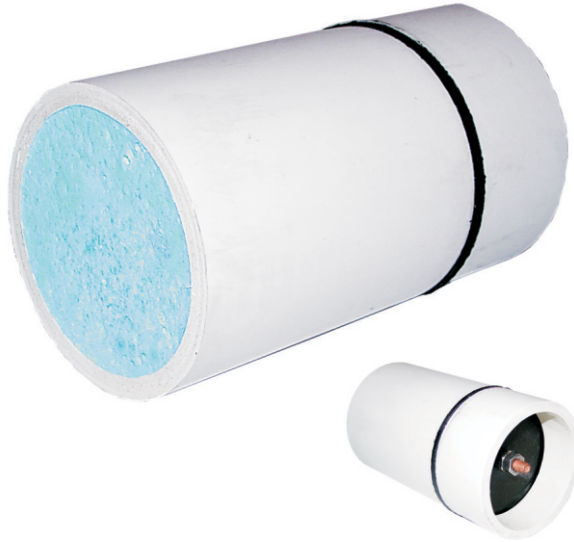
KIT: 12" x 6.75" x 4.5", 2 lbs.

(305mm x 171mm x 114mm, 0.908Kg)

SHIPPING: 13" x 7.5" x 5", 4 lbs.

(330mm x 191mm x 127mm, 1.81Kg)

Direct Burial Reference Electrode



MODEL SC-4 AgAg/Cl kit

DELIVERY: **Immediately from STOCK**
F.O.B. San Bernardino, CA USA

SERVICE: **24-hour Turn-Around**

TERMS: **Net30 Days**, on approval of credit

WARRANTY: **90 Days**, parts and labor